



Co-funded by the
Erasmus+ Programme
of the European Union



ANIMAL CARE AND ANIMAL HANDLING

E-book

Prepared by the European Erasmus+ project “A Magical Dream: Animal Assisted Therapy for disabled students”

Published 2019

“This project has been funded with support from the European Commission. This publication reflects the views only of the autor, and the Commission cannot be held responsible for any use which may be made of the information contained therein.”

ANIMAL CARE

Animal care sheets

If you have an animal in the classroom you have to make animal care sheets. It is a document that includes steps how to take care of the animal (cleaning enviroment, preparing the food, taking to vet...)

Students follow the steps in everyday care procedure.

It also includes practice good hygiene procedures.

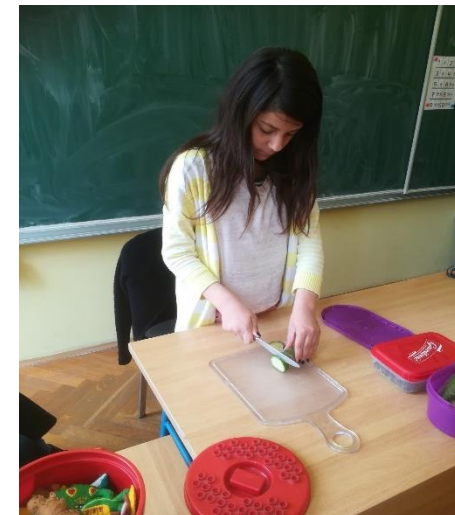
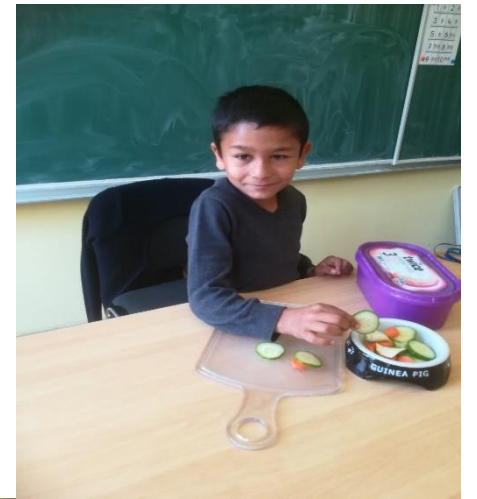
A Care Plan for Gricko -weekly

- open the cage and cuddle Gricko if he lets you
- with plastic spoon remove feces and change the napkin on the plastic surface (several times during the day)
- spill the remains of the food from the green pot, wash it with warm water, wipe it and put in it 3 handful of guinea pig food
- Spill the remains of the food from the white bowl, wash it and wipe it out
- spill liquids ,wash bottle with warm water and fill with cold water
- with wet wipes clean the plastic space around the food container



A Care Plan for Gricko -weekly

- pull out the vegetables from the refrigerator and carefully slice two pieces of each vegetables , wash it and put it in a white bowl
- carefully take the guinea pig under the chest and the back, put it on a firm soft cloth (yellow blanket),
- take the brush and brush Gricko with light movements in the direction of hair growth
- put the guinea pig in the cage, close the cage
- wash your hands



- Carefully take guinea pig under the chest and the back and put him in the transporter

- Remove the top of the cage and wipe it with a wet patch

- Remove the remains of the food and water, wash bowl and bottle with warm water

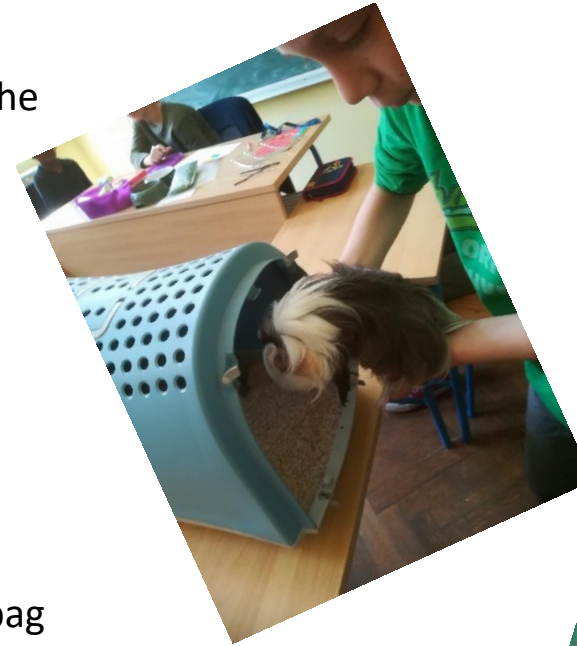
- Wash the plastic area around the food container with warm water and wipe it out

- Carefully remove all sawdust using a plastic container, put it in a trash bag and take it to the trash can

- Wash the cage with warm water and wipe it out with a clean mop

- Carefully put the sawdust in the cage (5 cm thick)

- Put a plastic shelf with food containers



A Care Plan for Gricko-every ten days

- Put food and water containers (add food if needed)
- Put the twigs and the toys on the sawdust
- Put the top of the cage and close it
- Take the guinea pig from the transporter and bring him back to the cage
- Wash your hands
- Every three months, Gricko has to go to the vet for health check, haircut and nail cutting (can and more often)



ANIMAL HANDLING

Why is Animal handling so important?

- In order to minimise the risk to children involved in programmes with animals and to minimise the risk to the animals that are used in programmes we need to follow best practices in animal handling.
- Appropriate animal handling helps the handler to carry out necessary procedures for health and welfare. It reduces stress to the animal and handler, reduce the occurrences of injury to animal and handler and makes interacting more enjoyable for all.

What includes animal handling?

- It includes gaining knowledge of particular animal, insure five freedoms (freedom from hunger and thirst, from pain, injury and disease, fear and distress, discomfort and to express normal behaviour), regular visit to the vet
- Animals should be kept in safe environment with suitable temperature, ventilation and humidity. Animal house should be regularly cleaned, checked and maintained
- Equipment that is used should be ethical

Best practice for dog handling

APPROACHING TO A DOG must be from the front, because dogs see things best when they are in front of them. A child should offer a hand to encourage interaction, and to let the dog smell them. Then they can rub the dog under chin and in the chest.



Best practice for dog handling

GENERAL EQUIPMENT- should be safe for a dog and not harm him while wearing.

Collars that tight the dog if you pull should not be used (like choke chains and slip leads).

Leather collars are the best option.



Best practice for dog handling

LIFTING-an animal should be done calmly. Animal needs to feel secure. Dogs should always be supported into handlers body, chest and rear end supported.

If the dog is medium or large breed two people need to lift him.

